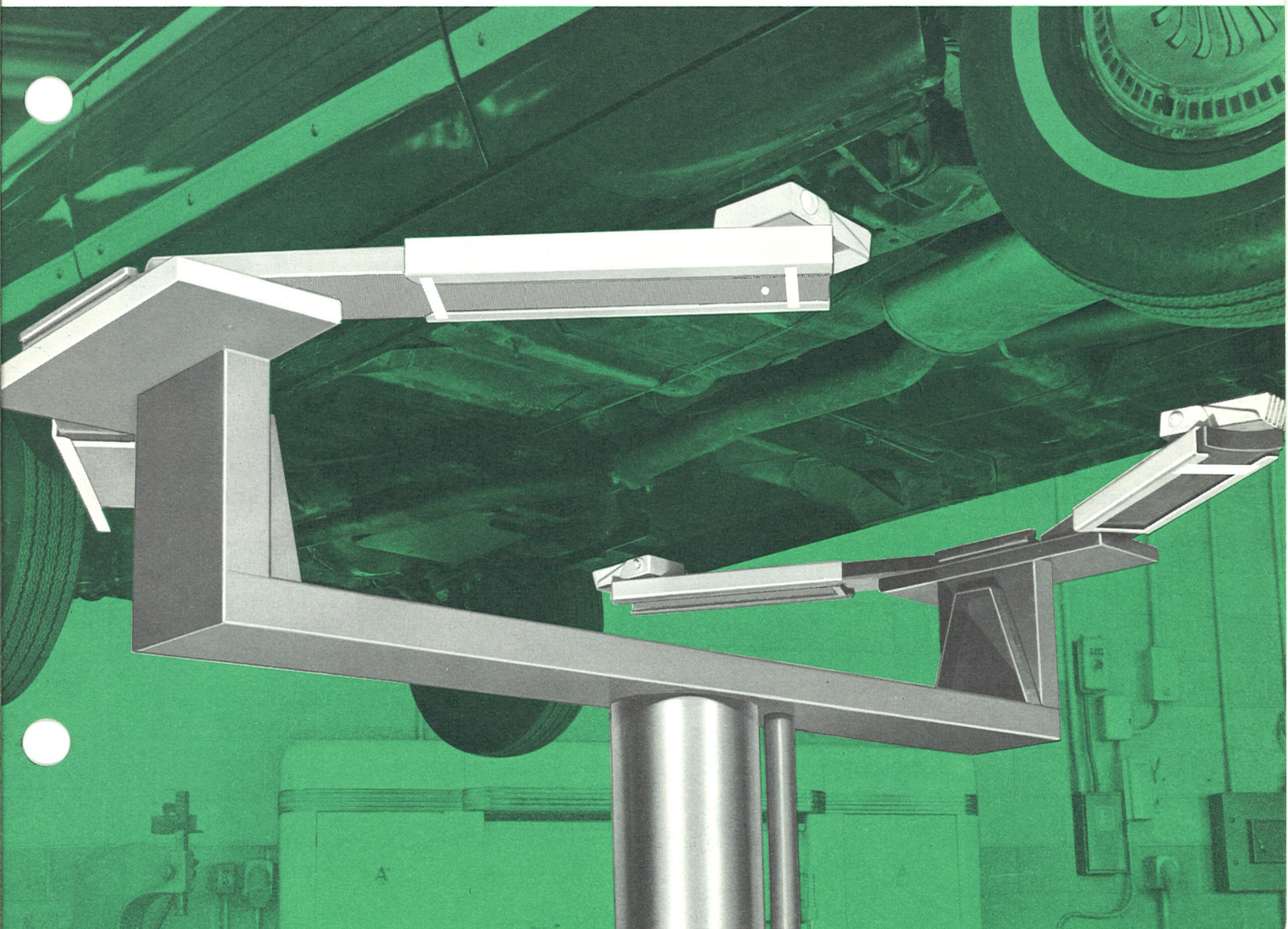


# **FORD-SMITH**

# **UNIVERSAL**

**FRAME CONTACT HOIST  
MODEL DT-10AS**

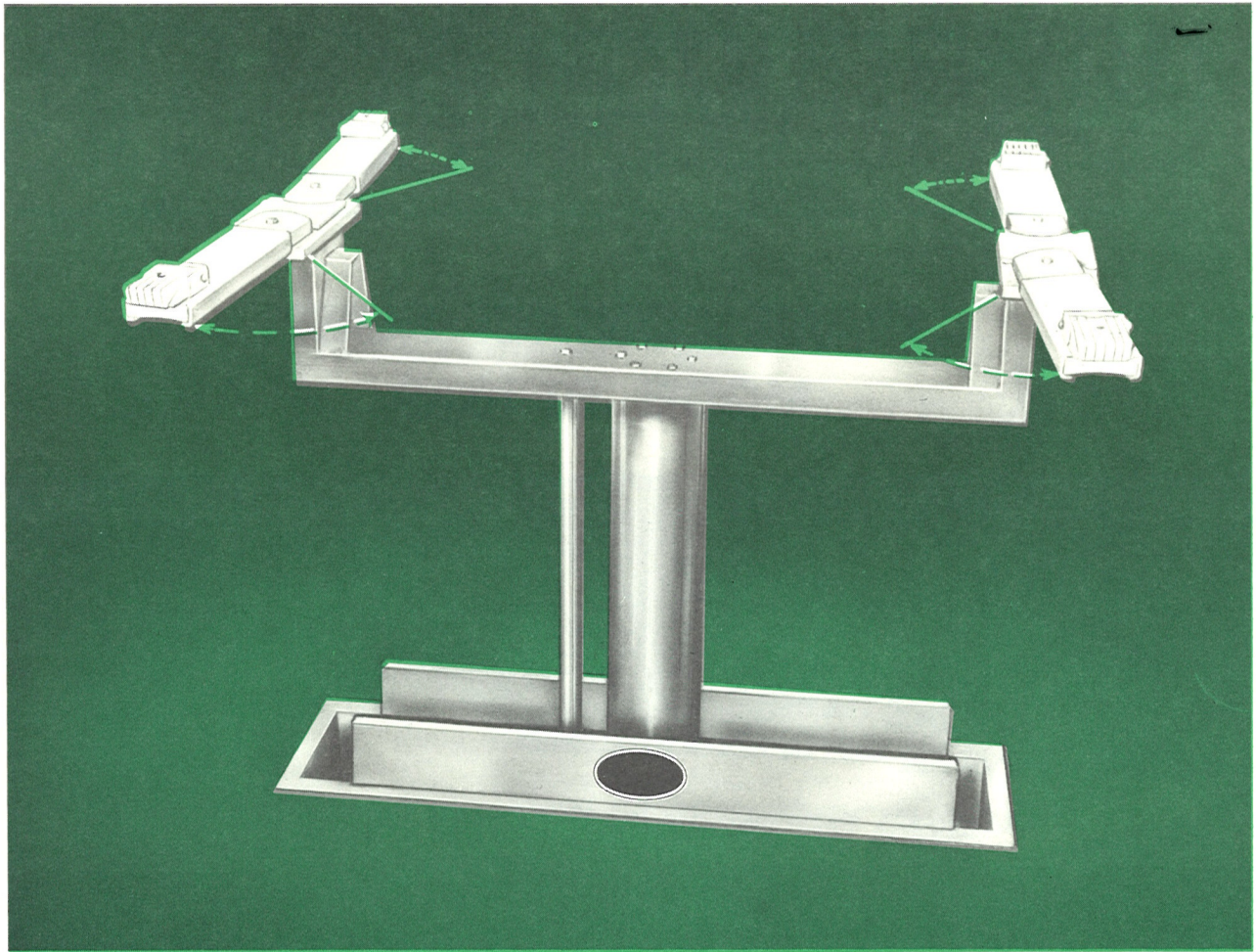




100% access to all moving or removable parts, including transmission, muffler, wheels, shocks, springs, front-end and tires.

# UNIVERSAL DRIVE-THRU

## FRAME CONTACT HOIST



**The DRIVE-THRU combines all these features into one lift:**

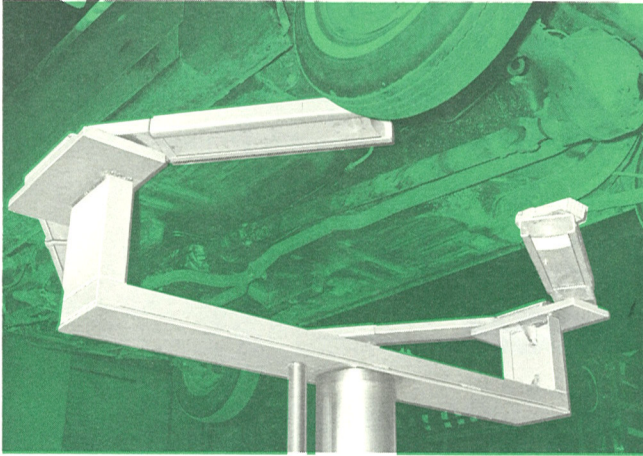
- Completely eliminates low-handling clearance problems when driving the car on the lift. Arms and lifting pads are outside the vehicle.
- Single post lift with transmission clearance equal to any two-post lift.
- Provides a working height of 18" between the lift crossmember and the vehicle.
- Provides built-in "workbench" across full width of vehicle.
- Gives total muffler and tailpipe clearance by extending arms from outside of the frame.
- Accessible arms on the outside provide quicker spotting on the lift . . . eliminate "fishing" for arms when placing pads under lifting points.
- Single-post lift installation and operation economy.
- A non-rotating device is a built-in feature. An automatic safety latch is optional at a nominal extra cost.



## The ultimate in underside accessibility for passenger cars and light trucks.

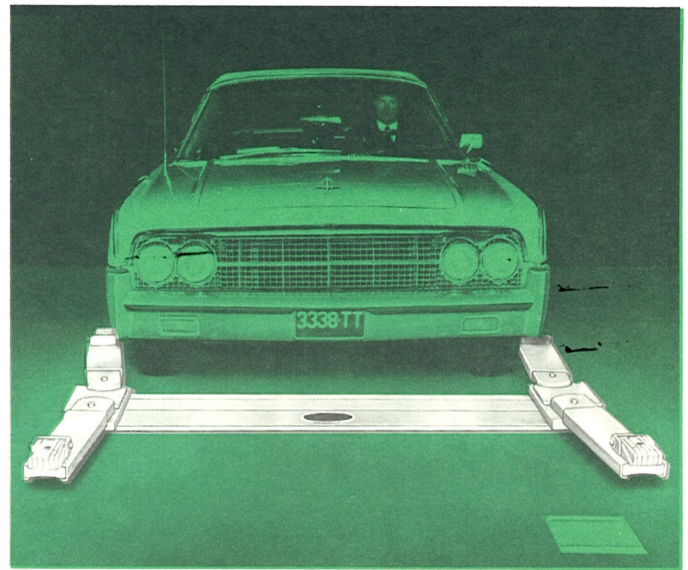
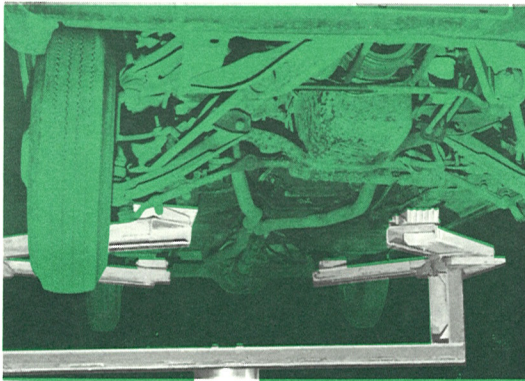
### Drive-Through Design

Allows the vehicle to be driven between the lift's arms which are then moved under the frame of the car. They swing in from the outside. A floor plate at the left front wheel indicates the correct position for the car.



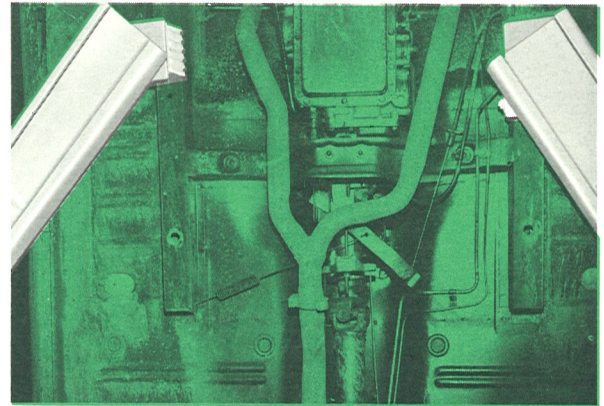
### Outside-to-Inside Design

Except where pads lift vehicle, the lift superstructure is either outside or below the work area. The cross-member acts as a workbench for the mechanic.



### Transmission and Muffler

Transmission and drive-shaft connection are completely accessible on the lift. The box-sectioned crossmember is only ten inches wide, opening up the underside area completely.



### Wheels, Shocks, Springs, Front-end and Tires

Lift arms move in from the outside to act as finger lifts. No other lift offers the same front-to-back clearance. Every moving or removable part is available, and the frame-lifting feature makes it a natural for swing-axle cars. Yoke and arms hold work 18" above the bolster-workbench.

## ARCHITECTURAL SPECIFICATIONS:

Single post semi-hydraulic hoist shall have 10 5/8" piston with stroke of 68". The hoist shall be fitted with DRIVE-THRU 18" deep swivel arm super-structure complete with detachable and reversible support sleeves on which shall be mounted 4-position 360° swivelling pads, including manual non-rotator and muffler.

The hoist shall have a lifting capacity of 8,000 lbs. at 150 p.s.i.

The oil seals and wiper packings shall be arranged to ensure positive contact with piston at all points of travel.

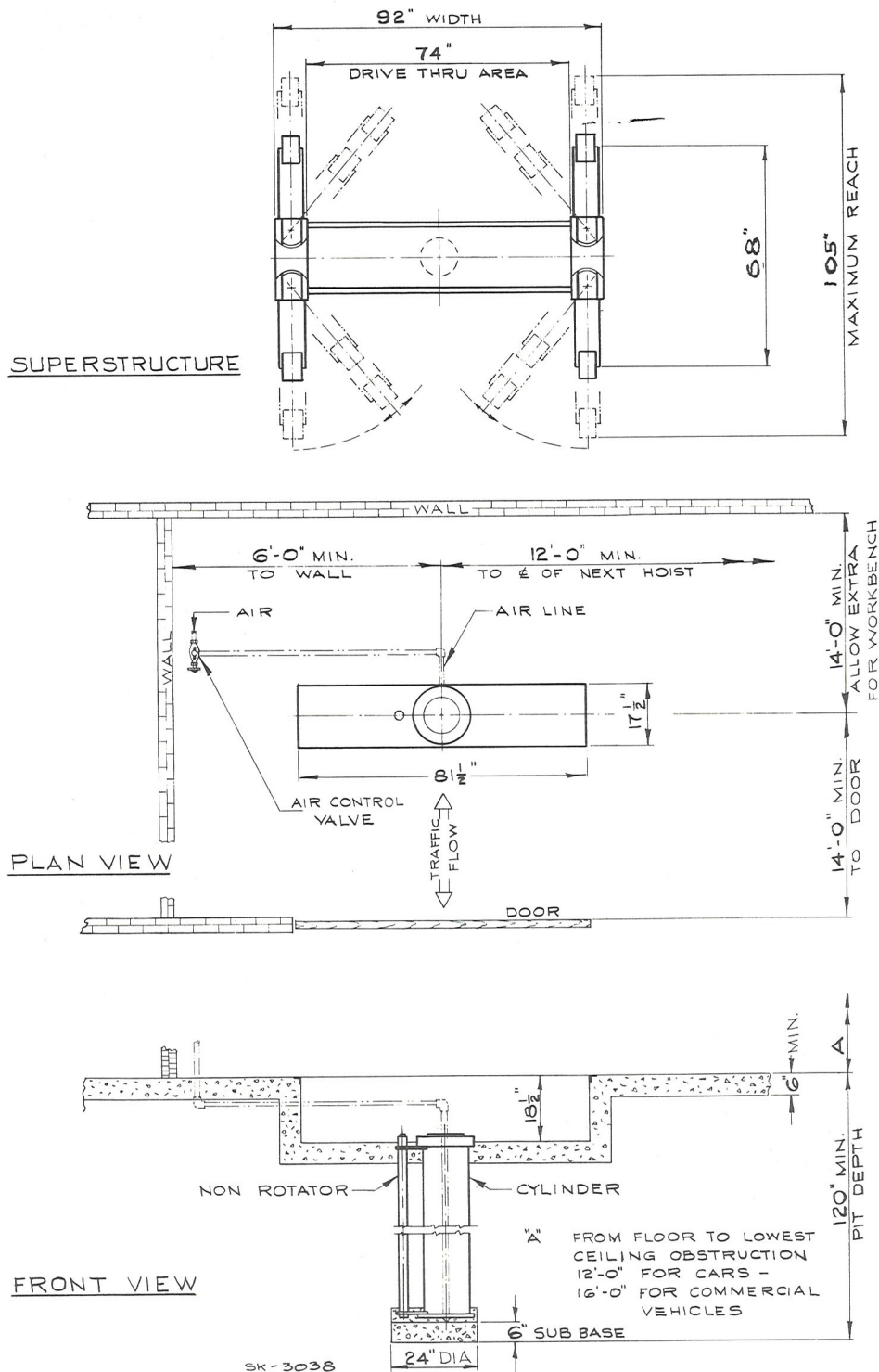
This contractor shall supply air control valve, and wheel locator plate.

This hoist shall be as manufactured by Ford-Smith Machine Co. Ltd., of Hamilton, Universal model DT-10AS.



# Typical layout DRIVE-THRU model DT-10AS Frame Contact Hoist

FOR REFERENCE ONLY — DO NOT USE FOR INSTALLATION.



**FORD-SMITH MACHINE COMPANY LIMITED**

PHONE 643-1273

675 ARVIN AVENUE, FRUITLAND, ONTARIO L0R 1L0

TELEX 061-8254

**FORD-SMITH COMPAGNIE, LIMITEE**

PHONE 739-4751

5643 RUE FERRIER, MONTREAL, QUEBEC H4P 1N1

TELEX 055-60887