



MODEL: DTK-10 (LOW PRESSURE)

DTK-10 ASL : Semi-Hydraulic
DTK-10 BSL : Full-Hydraulic

Benefits

- Completely eliminates low-handling clearance problems when driving the car on the lift. Arms and lifting pads are outside the vehicle.
- Single post lift with transmission clearance equal to any two posts lifts.
- Provides a working height of 18" between the lift cross-member and the vehicle.
- Provides built-in "workbench" across full width of vehicle.
- Gives total muffler and tailpipe clearance by extending arms from outside of the frame.
- Standard fiberglass coated casing and optional chrome piston available for maximum service life.

Applications

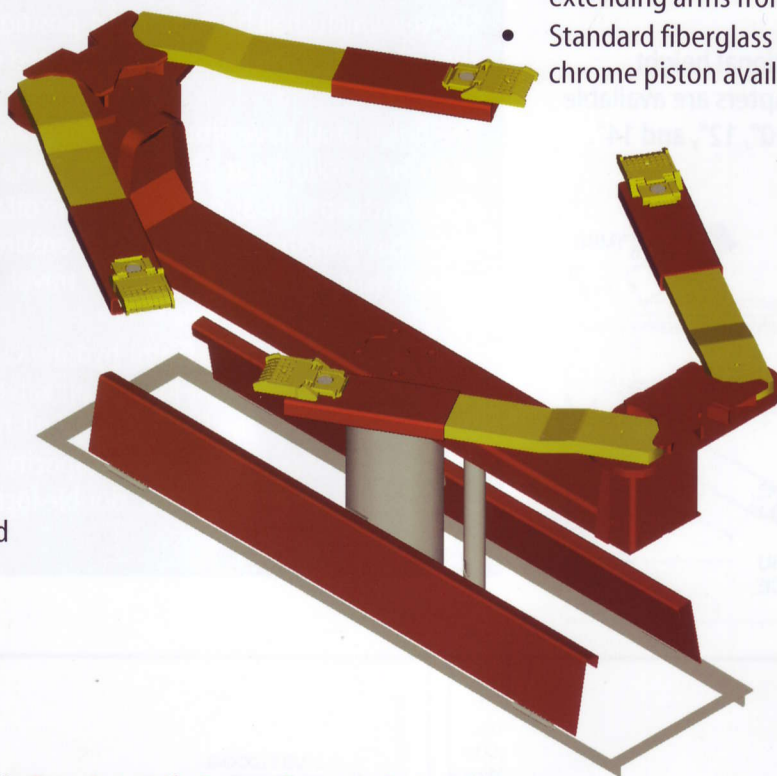
- Car Dealerships
- Tire Dealerships
- Tune Up Centers
- Body Shops
- Service Stations
- Fleet Service
- Quick Lubes

Characteristics

- Maximum Reach
- Maximum Spread
- Fast operation
- Easy Installation
- Low Clearance

Specifications

Type: Single Post Auto Lift, Frame Contact, Swivel Arms
 Capacity: Available in 8,000 lbs or 10,000 lbs
 Pressure: 135 PSI – 175 PSI (depending on capacity)
 Stroke: 68" (75" Rise)
 Cylinder: 10-5/8"
 Oil Required: 40 Gallons "AS" and 50 Gallons "BS"
 Adapters: Ductile iron, 4 adjustable positions on sliding sleeves
 Safety: Automatic locking K-Leg/Non-rotator and Low Oil Control are standard features.



Maintenance-Free

Unique wiper and oil seals eliminate weekly grease jobs, ensures years of trouble free performance because they seal in the oil and seal out the dirt.

Versatility

DTK-10 handles all chassis types; unitized, bowed and X-frames.

Low Clearance

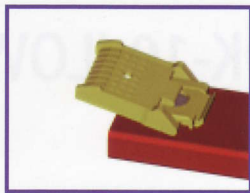
Minimum height on superstructure permits more space between swivel arms and car, allowing instant positioning even with irregular or sloping floor surfaces.

DTK-10 models are exempt from Federal EPA regulations relating to underground storage tanks. Regulation 40 CFR 280

Standard Multi-Position Adaptors



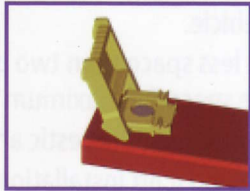
A: 1-1/4" Height



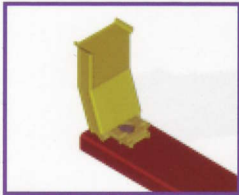
B: 2-1/2" Height



C: 3-3/4" Height



D: 6-1/4" Height



Optional height adaptors are available in 10", 12", and 14".



Reversible sleeve provides flexibility on today's smaller vehicle.

Standard single post Semi-Automatic Multi-Position Safety leg.

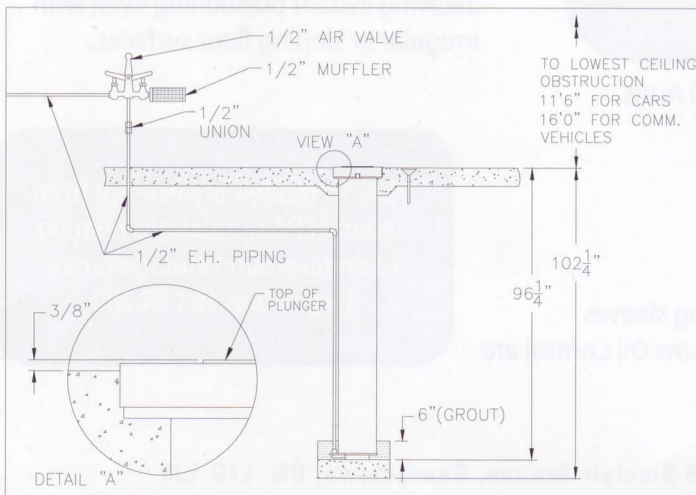
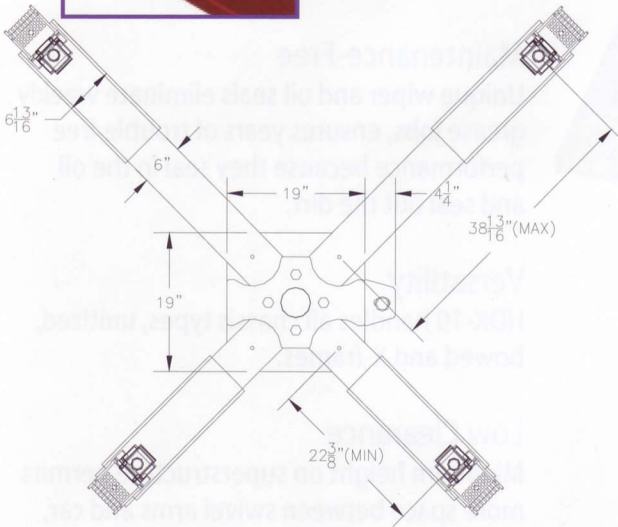


Suggested Written Specifications

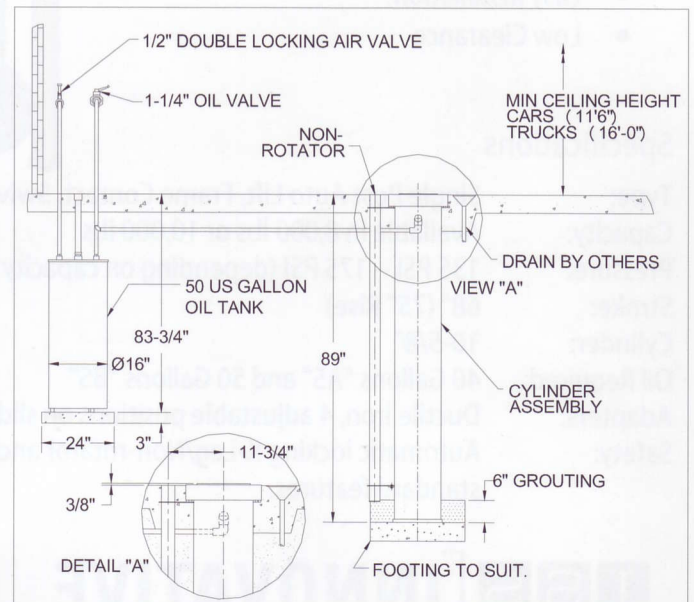
Single-post semi hydraulic or full hydraulic hoists shall have 10-5/8" piston with 68" stroke. The hoist shall be fitted with a swivel arm superstructure complete with detachable and reversible sleeves which shall be mounted 4-positions 360 degree swiveling pads and have a suitably rated capacity.

The hoists shall have lifting capacity ranging from 8000 lbs to 12000 lbs at 130 PSI – 180 PSI (and shall be fitted with options as requested.) The oil seals and wiper packing shall be arranged to ensure positive contact with piston at all points of travel.

Controls for HDK-10 ASL (Semi-hydraulic) model shall consist of one (1) 1/2" non-locking air valve and one (1) 1/2" air muffler. For HDK-10 BSL (Full-hydraulic), it shall consists of one (1) 50 gallon capacity oil tank, one (1) 1-1/4" oil valve, one (1) 1/2" double locking air valve and one (1) 1/2" air muffler.



MODEL: HDK-10ASL



MODEL: HDK-10BSL