



UNIVERSAL

FRAME CONTACT HOIST "FLAT YOKE" DRIVE-THRU

For Passenger Cars and Light Trucks

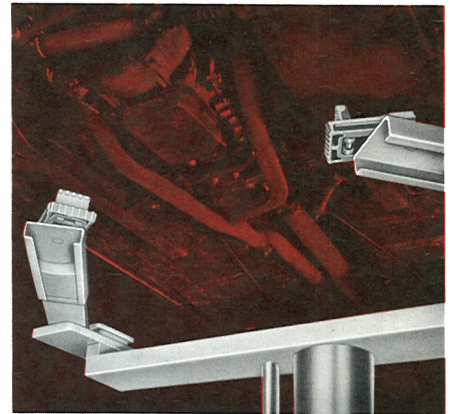


MODEL FDT-10AS

(SEMI-HYDRAULIC)

MODEL FDT-10BS

(FULL HYDRAULIC)



**100% Access to Transmission,
Muffler, Tailpipe, Springs, Wheels,
Shocks, Front End, Tires and
All Moving or Removable Parts**

The "Flat Yoke" Drive-Thru Hoist is designed to provide a low cost, full purpose mechanic's hoist with substantial cost reduction in equipment and installation. The crossmember is countersunk into the floor in a 4-inch deep depression which is easily drained and cleaned. The vehicle can be driven between the hoist arms which are then swung in from the outside. The 10-inch wide crossmember serves as a workbench and does not obstruct access to any portion of the underside of the vehicle. Full size cars, compacts and small trucks within the 8,000 lbs. capacity may be serviced. Excellent for swing-axle cars.

**UNIVERSAL "FLAT YOKE" DRIVE-THRU FRAME
CONTACT HOIST • MODELS FDT-10AS & FDT-10BS**

MODEL	CYLINDER DIAMETER	HOIST CAPACITY	SUPERSTRUCTURE
FDT-10BS (Full Hydraulic)	10½"	8000 Lbs. With 150 Lbs. Air Pressure At Hoist	Width —Outside to Outside 92" Inside to Inside 74" (Drive Through Area)
FDT-10AS (Semi-Hydraulic)			Length —Closed 68" Extended 105" Rise —68"

FORD-SMITH MACHINE COMPANY LIMITED

PHONE 643-1273

675 IDLEWILDE AVENUE, FRUITLAND, ONTARIO LOR 1L0

TELEX 061-8254

FORD-SMITH COMPAGNIE, LIMITEE

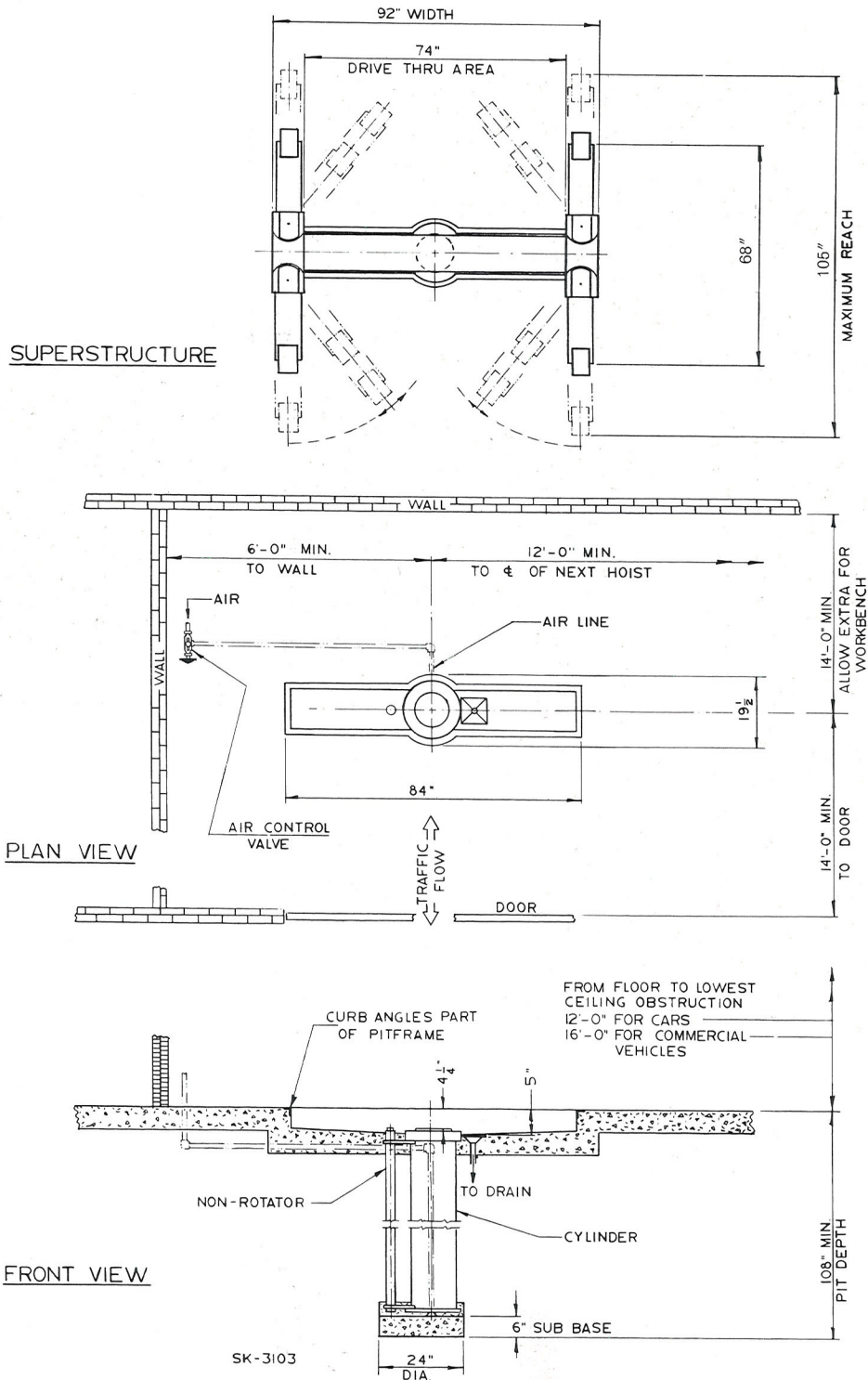
PHONE 739-4751

5643 RUE FERRIER, MONTREAL, QUEBEC H4P 1N1

TELEX 01-20031

Typical layout 'DRIVE-THRU' model FDT-10AS Frame Contact Hoist

FOR REFERENCE ONLY — DO NOT USE FOR INSTALLATION.



FORD-SMITH MACHINE COMPANY LIMITED

PHONE 643-1273

675 IDLEWILDE AVENUE, FRUITLAND, ONTARIO LOR 1L0

TELEX 061-8254

FORD-SMITH COMPAGNIE, LIMITEE

PHONE 739-4751

5643 RUE FERRIER, MONTREAL, QUEBEC H4P 1N1

TELEX 01-20031