

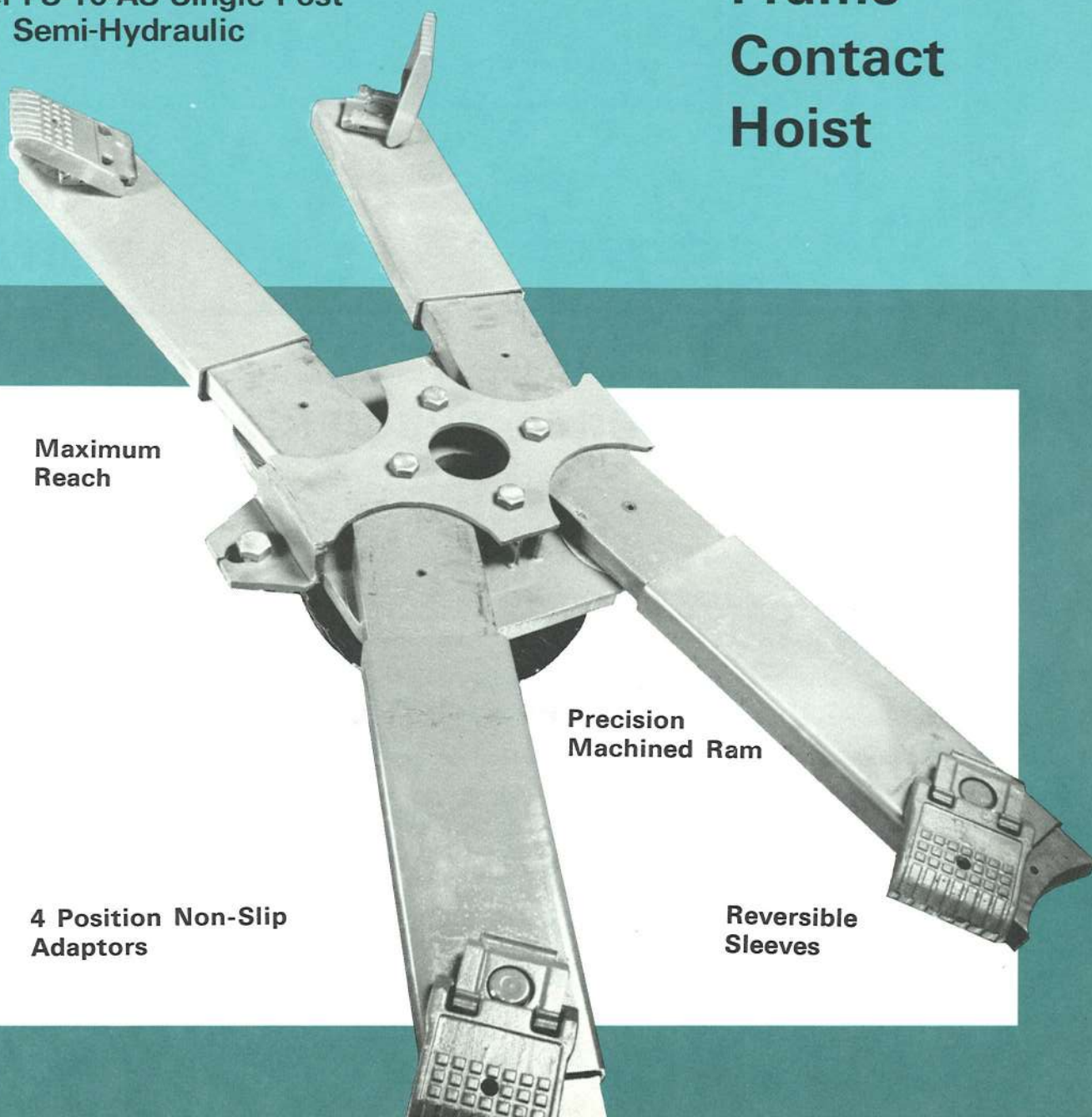


FORD-SMITH

UNIVERSAL

Model FS-10-AS Single Post
Semi-Hydraulic

Frame
Contact
Hoist



Maximum
Reach

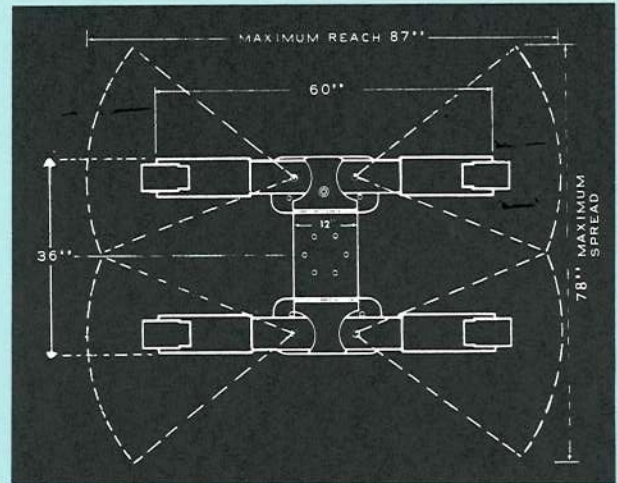
Precision
Machined Ram

4 Position Non-Slip
Adaptors

Reversible
Sleeves

FOR THE CARS OF TOMORROW

*After 55 years in business
Ford-Smith is now the leading
Canadian manufacturer of hoists
for present and future automobile
developments.*



ARCHITECTURAL SPECIFICATIONS:

Single post semi hydraulic Hoist shall have 10 $\frac{5}{8}$ " piston with stroke of 68". The hoist shall be fitted with swivel arm super-structure complete with detachable and reversible support sleeves on which shall be mounted 4-position 360° swivelling pads. The hoist shall have a lifting capacity of 8000 lbs. at 150 P.S.I. (and shall be fitted with options as required.)

The oil seals and wiper packings shall be arranged to ensure positive contact with piston at all points of travel.

This contractor shall supply air control valve, and wheel locator plate.

This hoist shall be as manufactured by Ford-Smith Machine Co. Ltd., of Hamilton, Universal Model No. FS-10-AS

. . . FORD-SMITH DESIGNS TODAY

- Maximum Reach
- Maximum Spread
- Maximum Working Room
- Fast Operation
- Easy Installation
- Low Clearance

Maintenance-Free

Unique wiper and oil seals eliminate weekly grease jobs — ensure years of trouble free performance because they *seal* in the oil — *seal out* the dirt.

Versatility

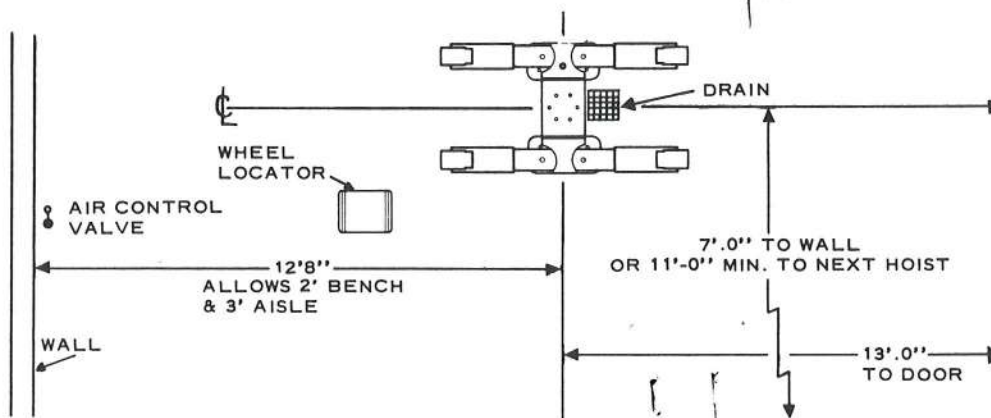
Ford-Smith UNIVERSAL Hoists handle all chassis types — unitized, bowed and x-frames, past, present and future.

Low Clearance

Minimum height on superstructure permits more space between swivel arms and car . . . allowing instant positioning even with irregular or sloping floor surfaces.

LOCATION OF HOIST

Headroom required:
11' 6" for cars
16' 0" for commercial vehicles



PURCHASING SPECIFICATIONS:

Ford-Smith Universal Model No. FS-10-AS Single Post Semi-Hydraulic Hoist complete with following optional extras:

Manual Safety-Leg with Non-Rotator
Automatic Safety-Leg with Non-Rotator
Chrome Plated Piston

Exhaust Muffler

Low-oil control

Full hydraulic also available with separate oil reservoir tank and oil control valve, specify model FS-10-BS

SPECIFICATIONS:

TYPE: Single Post Automobile Hoist

CAPACITY: 8000 Lbs.

STROKE: 68"

CYLINDER: 10 5/8" Dia.

SUPERSTRUCTURE: Frame Contact,
Swivel Arm.

CONTROL: Air Control Valve.

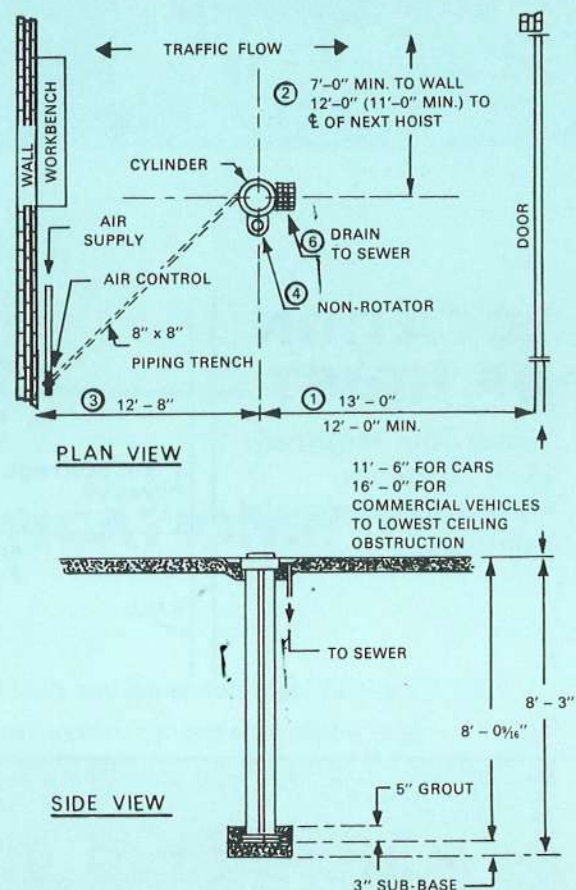
Air Supply Required — 150–175 PSI.

INSTALLATION INSTRUCTIONS FOR FORD-SMITH UNIVERSAL HOIST

"Associate numbers below with those circled on plan view."

(For reference only — not for jobsite use)

1. 12'–0" is the minimum dimension for clearance between rear bumper of longest car and garage door.
2. This dimension is necessary to allow the opening of car doors.
3. Allowance for a 2'–0" wide workbench plus 3'–0" clearance between front bumper of car and bench is made in this dimension.
4. Non rotator to prevent superstructure from turning is optional.
5. A drainage slope of 1/8" in 12" inclined to drain is recommended.
6. The drain is to be located adjacent to cylinder setting to conduct water away from piston.
7. Air control valve can be located where convenient but should give operator a full view of the hoist.



FORD-SMITH MACHINE COMPANY LIMITED

PHONE (416) 643-1273

675 ARVIN AVENUE, WINONA, ONTARIO L0R 2L0

FAX (416) 643-3055

FORD-SMITH COMPAGNIE, LIMITÉE

PHONE (514) 745-0014

3469 ASHBY, ST-LAURENT, QUÉBEC H4R 2K3

FAX (514) 745-0016