

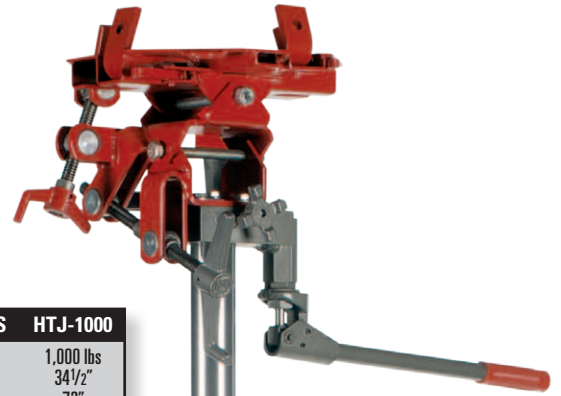


HIGH-RISE AUTOMOTIVE TRANSMISSION JACK

- 2-stage design: 1st stage 100% air operated for speed; 2nd stage hydraulic for precise control
- Swivel casters make for easy maneuverability
- Nylon Speed-Strap™ quickly and conveniently secures the load
- Heavy duty acme threaded screws provide greater bearing surface for easier tilt adjustments

SPECIFICATIONS	HTJ-1000
Capacity	1,000 lbs
Minimum Start Height	34 1/2"
Maximum Lift Height	72"
Power	1st Stage - Air 2nd Stage - Hydraulic
Head Plate Dimensions	11 1/2" x 11 1/2"
Overall Width	41"
Overall Length	41"
Swivel Caster Diameter	4"
Required Air Pressure	90 to 160 PSI
Tilt Forward	40°
Tilt Rear	20°
Tilt Side	10°
Shipping	125 lbs

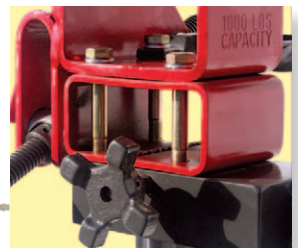
Manufactured in USA
Specifications are subject to change without notice.



Easy grip crank knobs



Four quick ratcheting brackets



Optional 2" height adapter

#90 Adapter
Designed for the vehicles where the exhaust passes next to the transmission pan prohibiting easy transmission removal.



Northstar® Adapter for 4T80E
Units stabilizes the pre-2000 model transmissions with only one mechanic by connecting to the side of the transmission in the provided bolt hole pattern.



All-Purpose Adapter Kit
Enables removal of transmission and transfer case as one unit and allows for easy removal of front wheel drive transaxles.



#45 Adapter 4 ratcheting adapters stabilize irregular-shaped transmission pans allowing one-person removal and installation.



Rated #1 by the
Professional R&D
Technicians



HTJ-1000

1,000 lb. Capacity