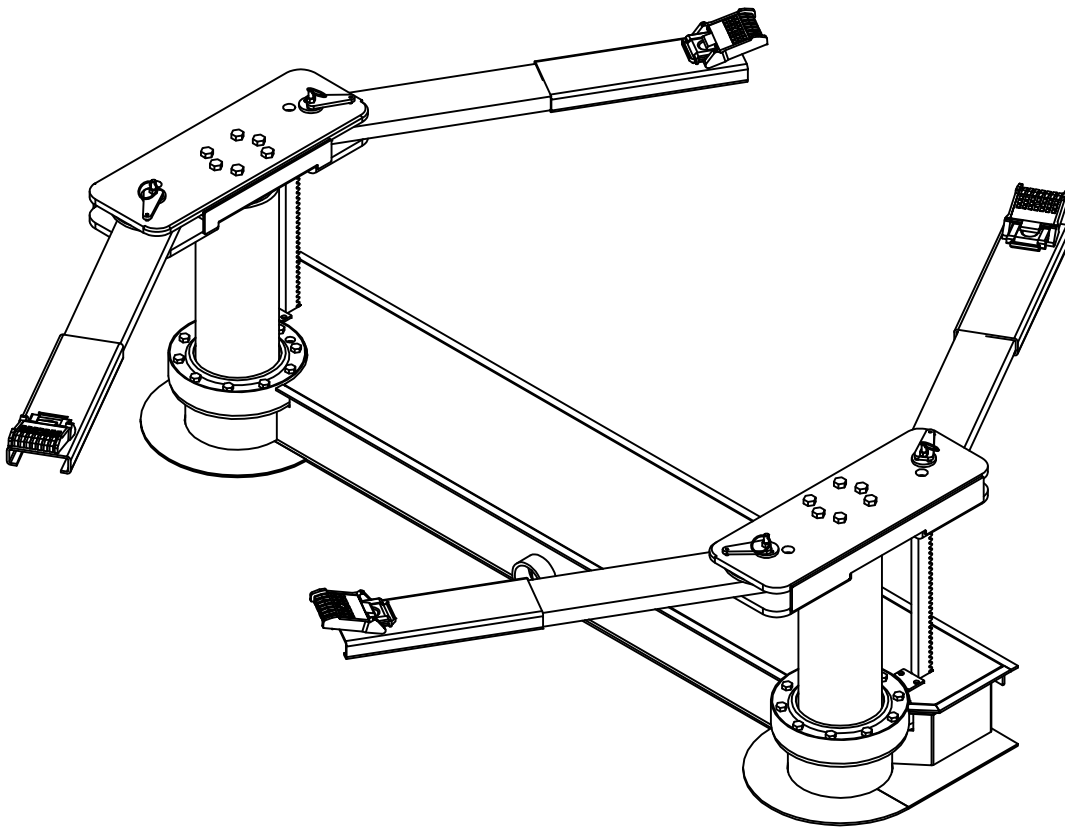




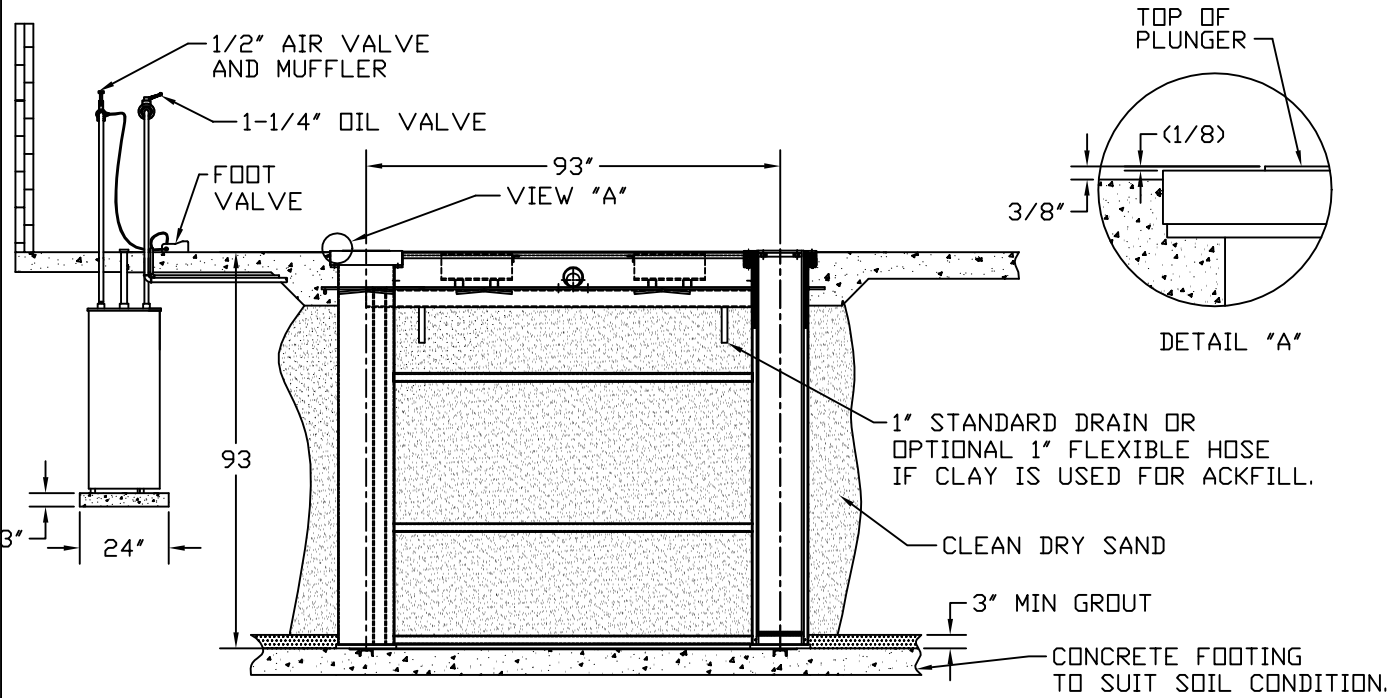
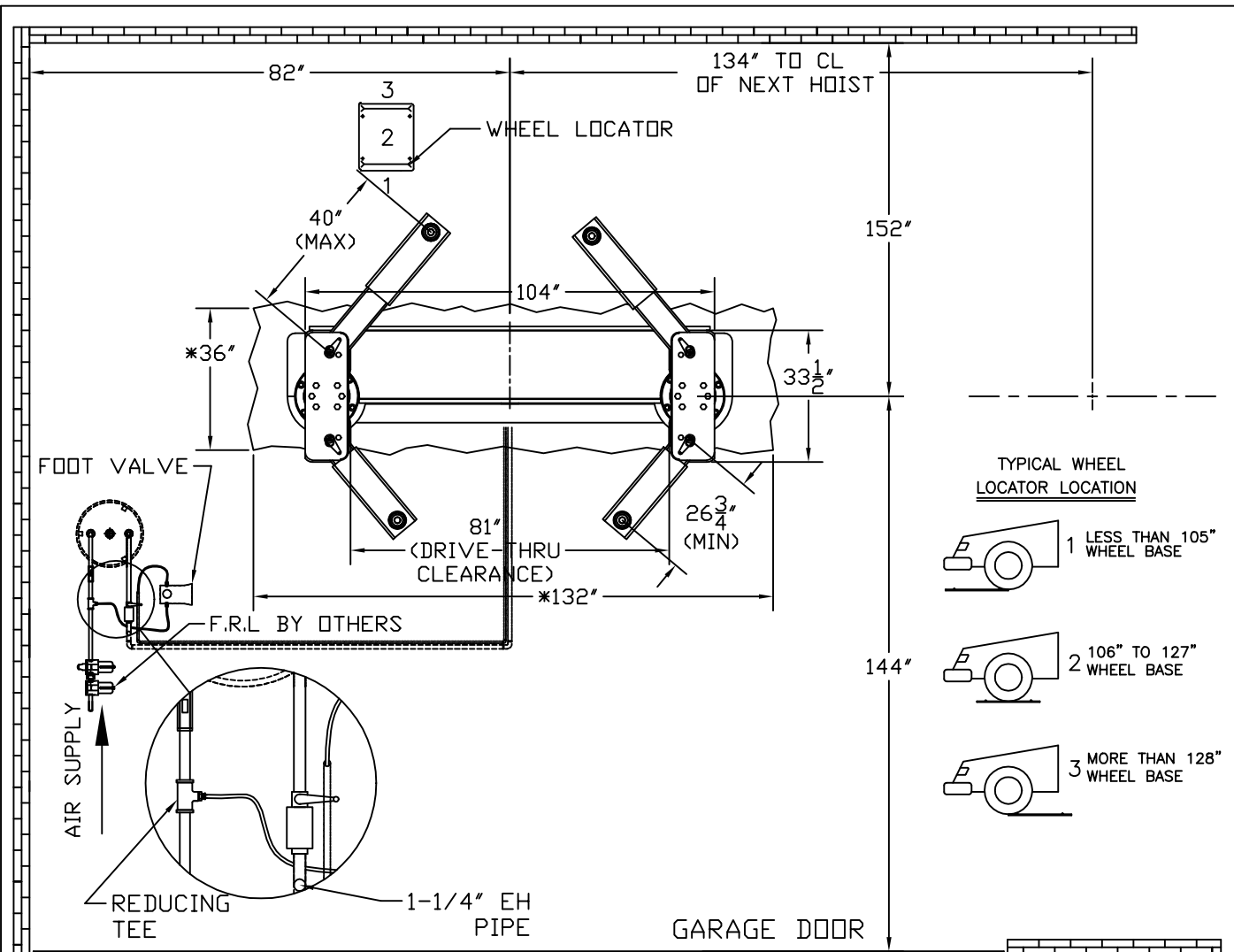
INSTALLATION INSTRUCTIONS MAINTENANCE & OPERATIONS MANUAL



MODEL: SS-210LP-93-10C
CAPACITY: 10,000 LBS.



35 SINCLAIR AVENUE, GEORGETOWN, ON L7G 1J3
T. 905.702.2778 ■ F. 905.702.2759 ■ TF. 1.800.567.0014
WWW.ISSMFG.COM ■ INFO@ISSMFG.COM



REV 3

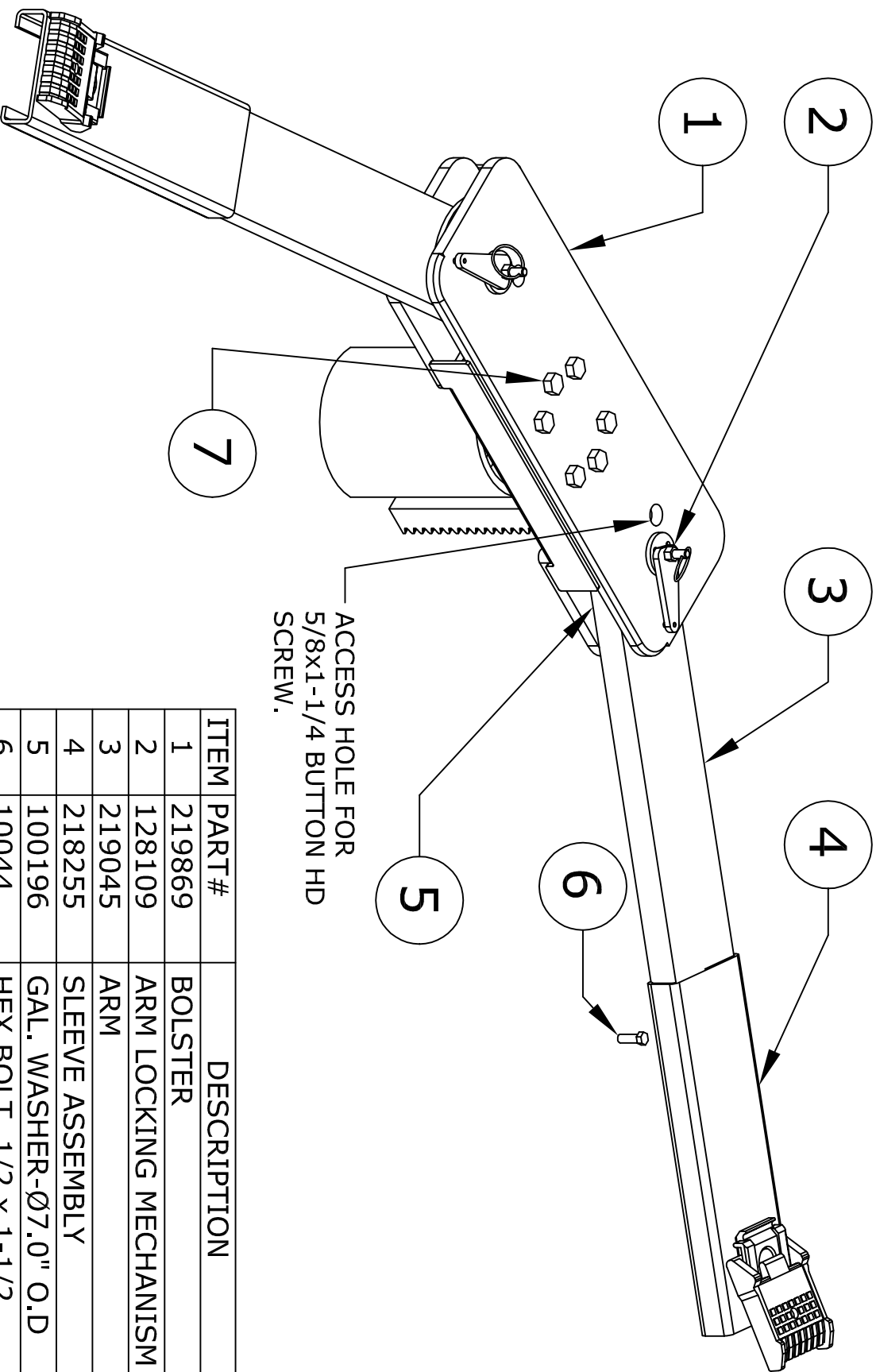
This disclosure is to be maintained in confidence. All invention rights disclosed herein reserved by I.S.S.

ISS INNOVATIVE STEEL SYSTEMS INC.

TITLE **INSTALLATION LAYOUT**
SS-210LP-93-12C

DATE
SEPT 26
2005

DWG.
128154



ITEM	PART #	DESCRIPTION
1	219869	BOLSTER
2	128109	ARM LOCKING MECHANISM
3	219045	ARM
4	218255	SLEEVE ASSEMBLY
5	100196	GAL. WASHER-Ø7.0" O.D
6	10044	HEX BOLT, 1/2 X 1-1/2
7	11169	HEX BOLT, 3/4 X 4-1/2 LG.

This document is to be maintained in confidence. All invention rights reserved by ITRM INNOVATIVE STEEL SYSTEMS INC.

UNSPECIFIED LIMITS:
 DEC. ±.000 ANGLE ±1/2°
 RPOC. ±1/16

SCALE : NTS

DATE: MAR 1/06

TITLE: BOLSTER & ARM ASSEMBLY

SS-28-93-10C

REV. ZONE: REVISION DESCRIPTION: E.C.N. NO.: DATE: BY: CHKD:

SHT. 1 OF 1 DWG. 128162