

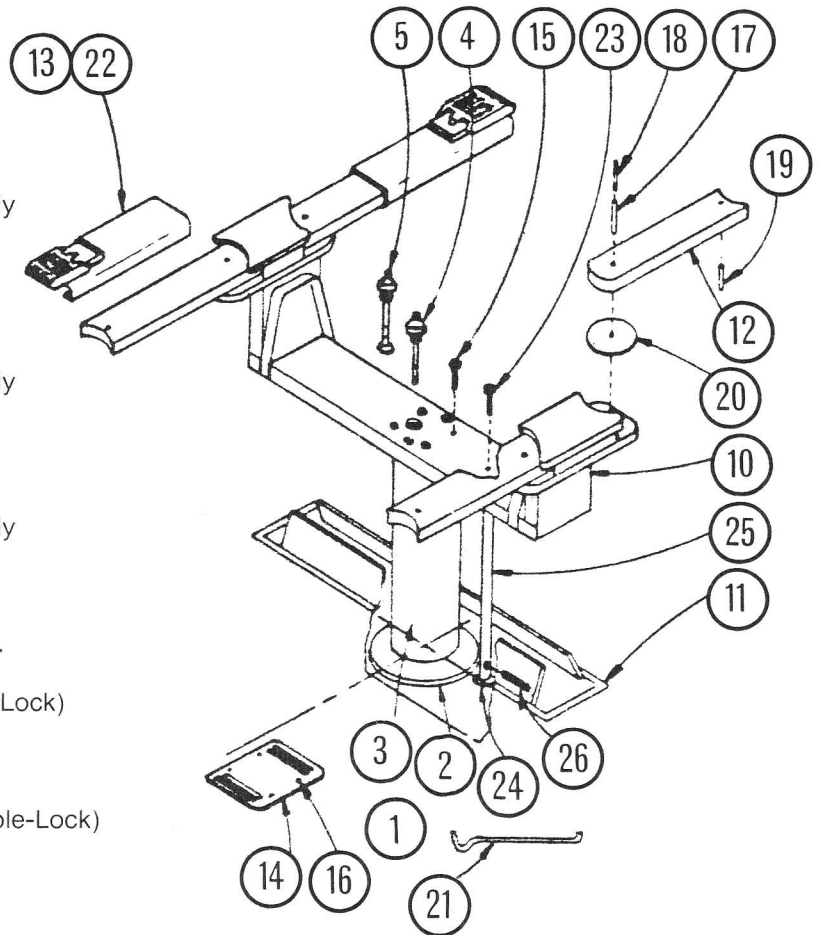
# DT-10

## PARTS LIST

ITEM	QTY.	PART No.	DESCRIPTION
<b>DT-10-AS</b>			
1	1	203233	Cylinder Assembly
2	1	203247	Cylinder Casing Only
3	1	203241	Plunger Assembly
4	1	203129	Oil Gauge Stick
<b>DT-10-BS</b>			
1	1	203239	Cylinder Assembly
2	1	203249	Cylinder Casing Only
3	1	203245	Plunger Assembly
<b>DT-10-ASL</b>			
1	1	203237	Cylinder Assembly
2	1	203247	Cylinder Casing Only
3	1	203243	Plunger Assembly
5	1	203131	Oil Gauge Stick
<b>CONTROLS</b>			
<b>DT-10-AS AND ASL</b>			
6	1	10932	Air Exhaust Muffler
7	1	11092	1/2" Air Valve (Non-Lock)
<b>DT-10-BS</b>			
6	1	10932	Air Exhaust Muffler
8	1	11093	1/2" Air Valve (Double-Lock)
9	1	12615	1" Oil Valve
<b>COMMON PARTS</b>			
10	1	101381	Bolster Assembly
11	1	101372	Pitframe with Doors
	1	101373	Wood Frame (Cement)
12	4	101658	Swivel Arms
13	4	101655	Pad and Sleeve Assembly (Std.)
14	1	100199	Wheelstop
15	4	11218	Hex. Hd. Bolt — 7/8" - 9 NC x 4-1/2" LG
16	4	10960	Rawl Drive Pins
17	4	10980	1/2" x 2-1/2" Spring Pin
18	4	10983	5/16" x 2-1/2" Spring Pin
19	4	11765	3/8" x 1-1/2" Spring Pin
20	4	100196	Washer
21	1	100778	Positioning Rod
22	4	100776	Pad and Sleeve Assembly (Short)
<b>NON-ROTATOR</b>			
23	1	11217	Hex. Hd. Bolt — 1" - 8 NC x 4-1/2" LG
24	1	203130	Non-Rotator Casing
25	1	100762	Non-Rotator Plunger (Manual)
26	1	102649	Safety Bar

### PAD AND SLEEVE ASSY. (4 POSITION)

27	1	100772	Swivel Base
28	1	100774	Swivel Pin
29	1	100773	Swivel Pad
30	1	100656	Sliding Base (Std.)
31	2	11026	Stop Pin
32	1	100777	Sliding Base (Short)



**PAD AND SLEEVE ASSEMBLY  
(4 POSITION)**

