

6,000 LB CAPACITY PORTABLE SCISSOR LIFT

MODEL USL-6000

FULL UNDER CAR ACCESS



*Mohawk – Because Quality
Made Lifts Last Forever*

MOHAWK USL-6000

SPACE SAVING, FULL RISE, FULL ACCESS & FULLY PORTABLE LIFT

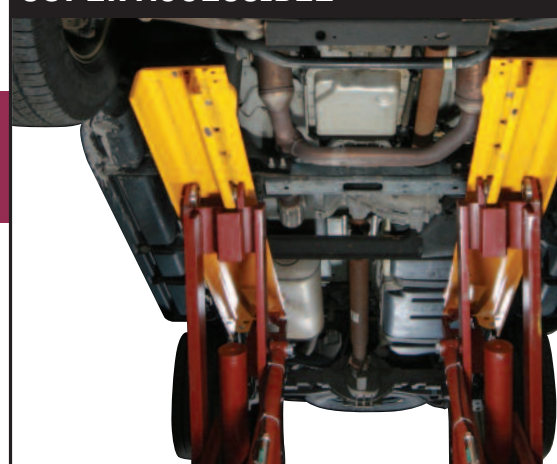
BENEFITS AND FEATURES

- **FULL RISE, SPACE SAVING** design lifts straight up and down, with **NO HORIZONTAL MOVEMENT**
- **NO-POSTS** - takes up minimal shop space
- **QUICK LOADING** - just drive on, position the contact pads, and raise the vehicle.
- **FULLY PORTABLE** and easily moved by one person
- Offers **UNOBSTRUCTED SIDE ACCESS** for brake and tire service while also making a great lift for repairs, prep, and estimating lift for body shops
- **FULL AND UNRESTRICTED ACCESS** for exhaust, driveline, oil, and transmission work
- **6,000 LB. CAPACITY** handles passenger cars, mini vans, sports utility vehicles, and all but the heaviest pick-up trucks and full sized vehicles
- Use indoors, outside, or anywhere an extra lift is needed
- **NO INSTALLATION REQUIRED!**
The USL-6000 comes fully assembled and ready to operate
- "Flush Mount" available to make the lift level with the shop floor
- Can be used outdoors on any hard level concrete surface

SAFETIES

- Locks start engaging at 18" stroke
- Multi-position mechanical locks on both scissoring legs
- Single point air operated twin safety release
- Infinite position hydraulic safety systems consisting of pressure compensated flow control and velocity fuse valving
- Factory-set overload limit sensor in power unit

SUPER ACCESSIBLE



▲ USL-6000 offers full & unrestricted under vehicle access for all under car service.



OPERATION AND DESIGN

- Heavy duty 3" hydraulic cylinders in each scissoring leg
- Large wheels and stable, solid steel lift platform
- Heavy 1-1/2" x 4" solid steel machine-milled main scissoring legs
- Self-lubricating at all scissor pivot points & connections
- Quick connect hydraulic hose couplings for hydraulic & air safeties

1

SUPER VERSATILE

2



▲ At lower heights, the USL-6000 is ideal for brakes, tires, body & pre-paint prep work.

SUPER SMART

3



▲ Mohawk USL-6000 includes four fully-rotating swing arms, four 3" stacking truck adaptors & four 1" rubber lift pads.

SUPER FAST

4



▲ The USL-6000 operates on 110 volts reaching full height in 90 seconds.

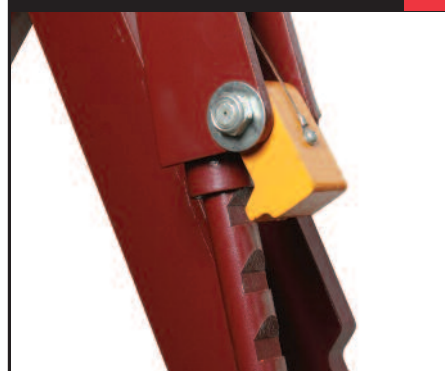
Multiple positions for arms and adaptors

360° rotating swing arms

3" truck adaptors

SUPER SAFE

5



▲ Twin 10 position mechanical safety locks are disengaged by a single point, air safety release. Mechanical locks start engaging at 18" & continue to full 6' lifting height.

7

Moving the USL-6000 is an easy one man job with the portable dolly (included).



LOW RIDING CARS

6



▲ For very low riding sports cars, a 2" x 10" board raises the ride height or "flush mount" in the shop floor.

8

▲ Ideal for professional shops, body shops, auto enthusiasts, or anyone repairing or restoring vehicles.



USL-6000 SPECIFICATIONS

Capacity:	6000 lbs. (2722 kg)
Lift Speed:	90 seconds
Motor Rating:	110 VAC single phase
Overall Length:	98-1/2" (2.50m)
Overall Width:	45-3/8" (1.15m)
Lifting Stroke:	5' 7" (1.70m)
Lift Height at Top of Platform:	5' 11-3/4" (1.82m)
Lift Height at Top of Swing Arm:	6' 1/2" (1.84m)
Max. Lift Height with Swing Arm Adaptor:	6' 4-1/2" (1.94m)
Min. Lowered Platform Height:	4-3/4" (0.12m)
Min. Lowered Height with Swing Arm:	5-1/2" (0.14m)
Max. Swing Arm Reach (Longitudinal):	70-1/4" (1.78m)
Width Between Lifting Platforms:	27-3/8" (0.70m)
Platform Width:	9" (0.23m)
Mechanical Safety Locks:	Ten positions starting at @ 18" stroke and engaging every 6" to full height
Mechanical Safety Lock Release:	Single Point Air Release
Back-up Hydraulic Safety System:	Pressure compensated flow controls & velocity fuses
Synchronization:	Structural tie between platforms assures even lifting
Lifting Mechanism:	Two (2) 3" direct drive cylinders using no cables, chains or mechanical lifting screws
Swing Arm:	Includes: (4) Rotating Swing Arms (4) 3" Height Adaptors (4) Rubber Lifting Pads
Concrete Floor Requirements:	Flat, level surface
Warranty:	1 year, (including motor & pump)
Lift Weight:	1700 lbs. (771 kg)
Shipping Weight:	1900 lbs. (862 kg)

Mohawk builds the best products with the finest materials, to the highest standards. Just compare our lifts. Our staff will assist you with a fleet evaluation, design assistance and answer any technical questions you have. We invite your calls.

Mohawk lifts are manufactured in compliance with the following standards: OSHA, ALI, ANSI, ASME, AISI, ASTM, ASA, NEC, AWG, NEMA.

U.S AND WORLDWIDE PATENTS PENDING



Mohawk Resources, LTD.

P.O. Box 110

65 Vrooman Ave

Amsterdam, NY 12010

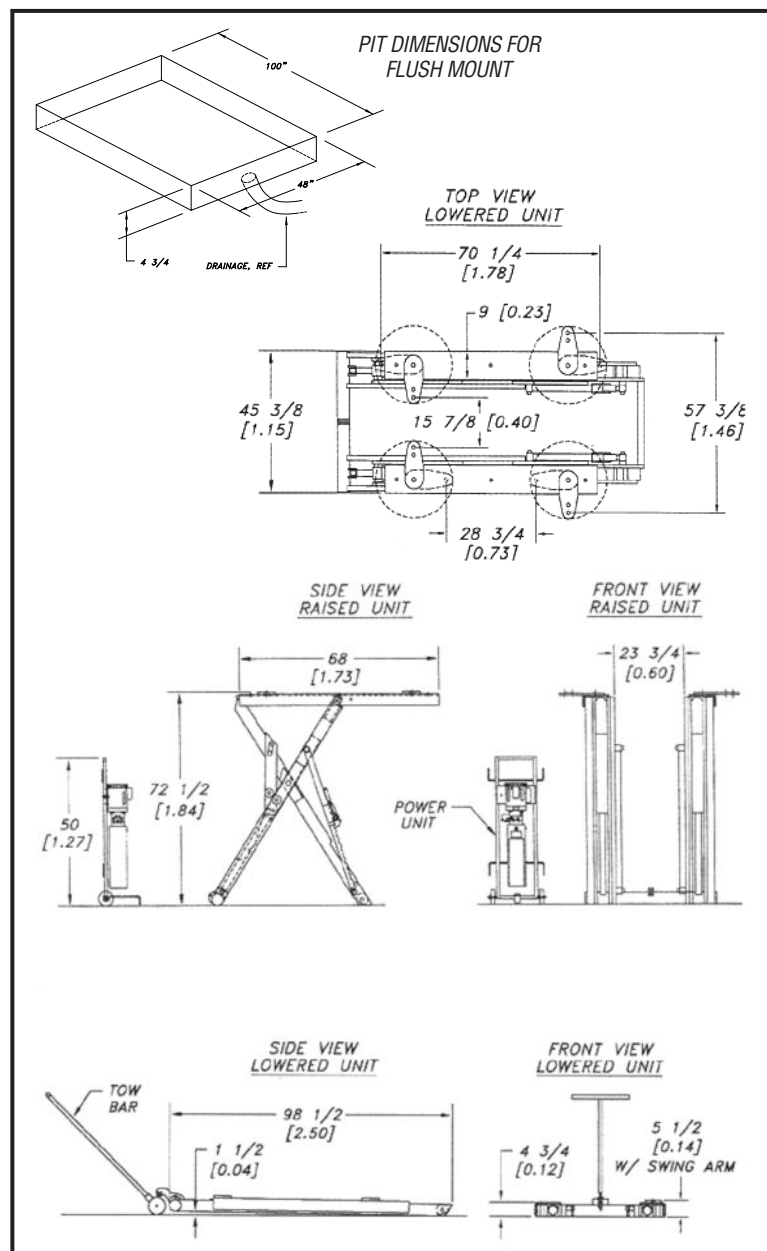
(800) 833-2006

(518) 842-1431

FAX: (518) 842-1289

www.mohawklifts.com

AVAILABLE UNDER
GOVERNMENT
CONTRACT IN ALL
50 STATES



SPECIFICATIONS SUBJECT TO CHANGE WITHOUT NOTICE.



For more detailed product information
read this book at www.mohawklifts.com.

DISTRIBUTED BY: